

## ESHNR Webinar 2019.7 - MCQs

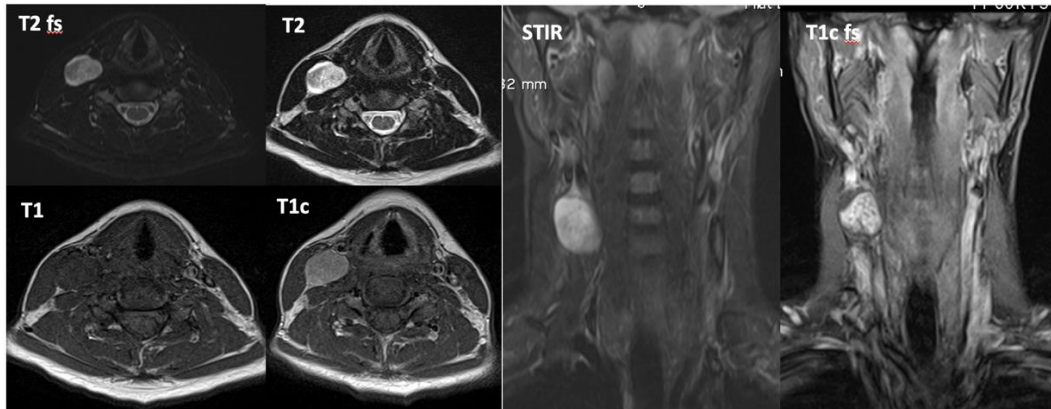
October 15, 2019: Julia Frühwald-Pallamar, St. Pölten

Spaces of the head and neck

(level I – II European Training Curriculum)

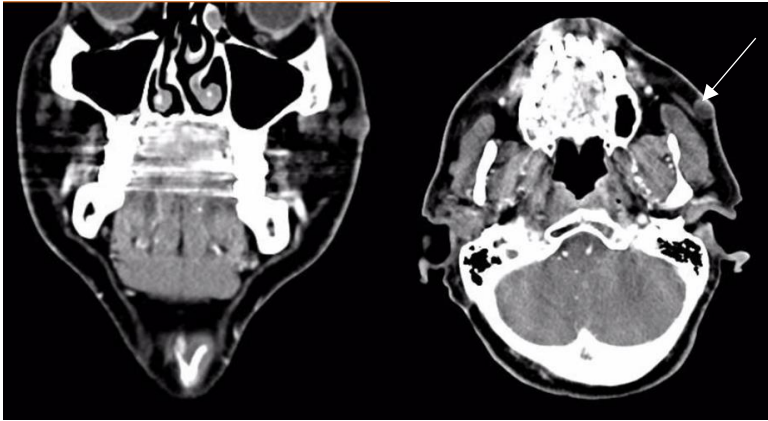
If you would like to claim 1 point for the ESHNR Diploma, please send your answers (e.g. 1 – a; 2 – b etc.) via e-mail to [office@eshnr.eu](mailto:office@eshnr.eu)

- 1. The mylohyoid muscle runs through which space?**
  - Masticator space
  - Parapharyngeal space
  - Submandibular space
  - Retropharyngeal space
  - Parotid space
- 2. Glomus tumors are often found in which space?**
  - Parotid space
  - Masticator space
  - Carotid space
  - Prevertebral space
  - Retropharyngeal space
- 3. 33 years old female patient with growing lump on her right neck. What is the most likely diagnosis and space?**



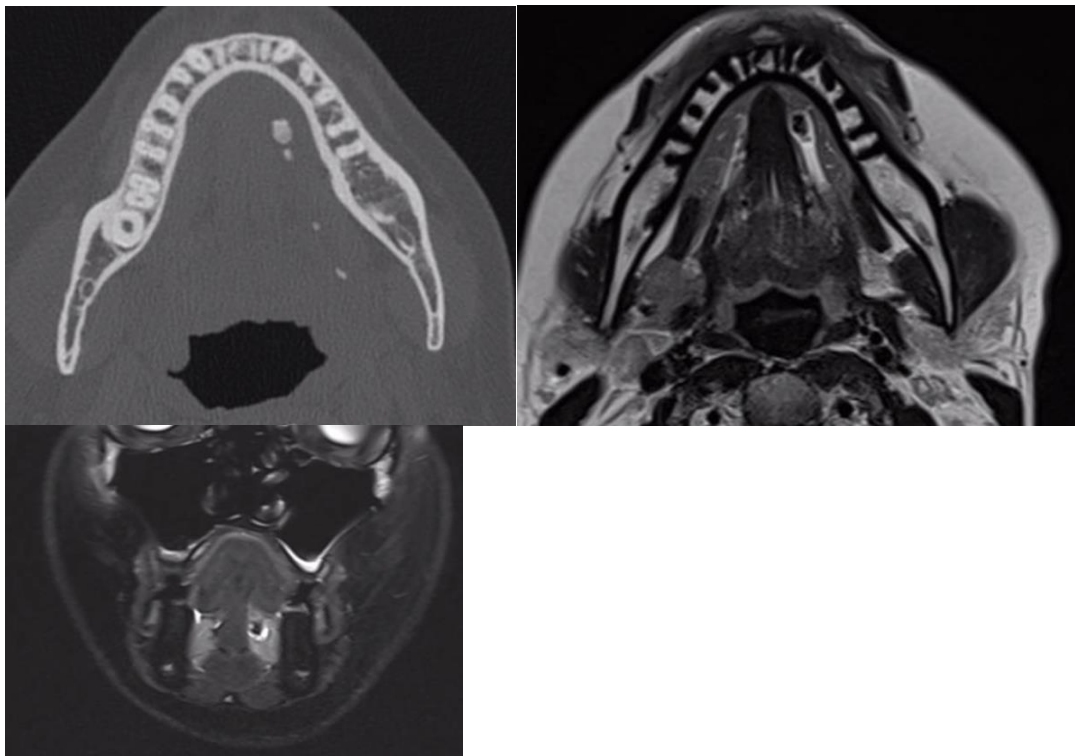
- Pleomorphic adenoma in submandibular space
- Pleomorphic adenoma in parotid space
- Glomus tumor in carotid space
- Schwannoma in carotid space
- Abscess in retropharyngeal space

4. In which compartment is the lesion (arrow) located?



- a. Parotid space
- b. Carotid space
- c. Masticator space
- d. Space of superficial cervical fascia
- e. Submandibular space

5. Where are the calcifications located?



- a. Submandibular space
- b. Carotid space
- c. Masticator space
- d. Mucosa space
- e. Parotid space