

**eshnr**

European Society of  
Head and Neck Radiology

**ESHNR 2020 Online Teaching Weeks**  
20 hours of on-demand education  
October 24 to December 7

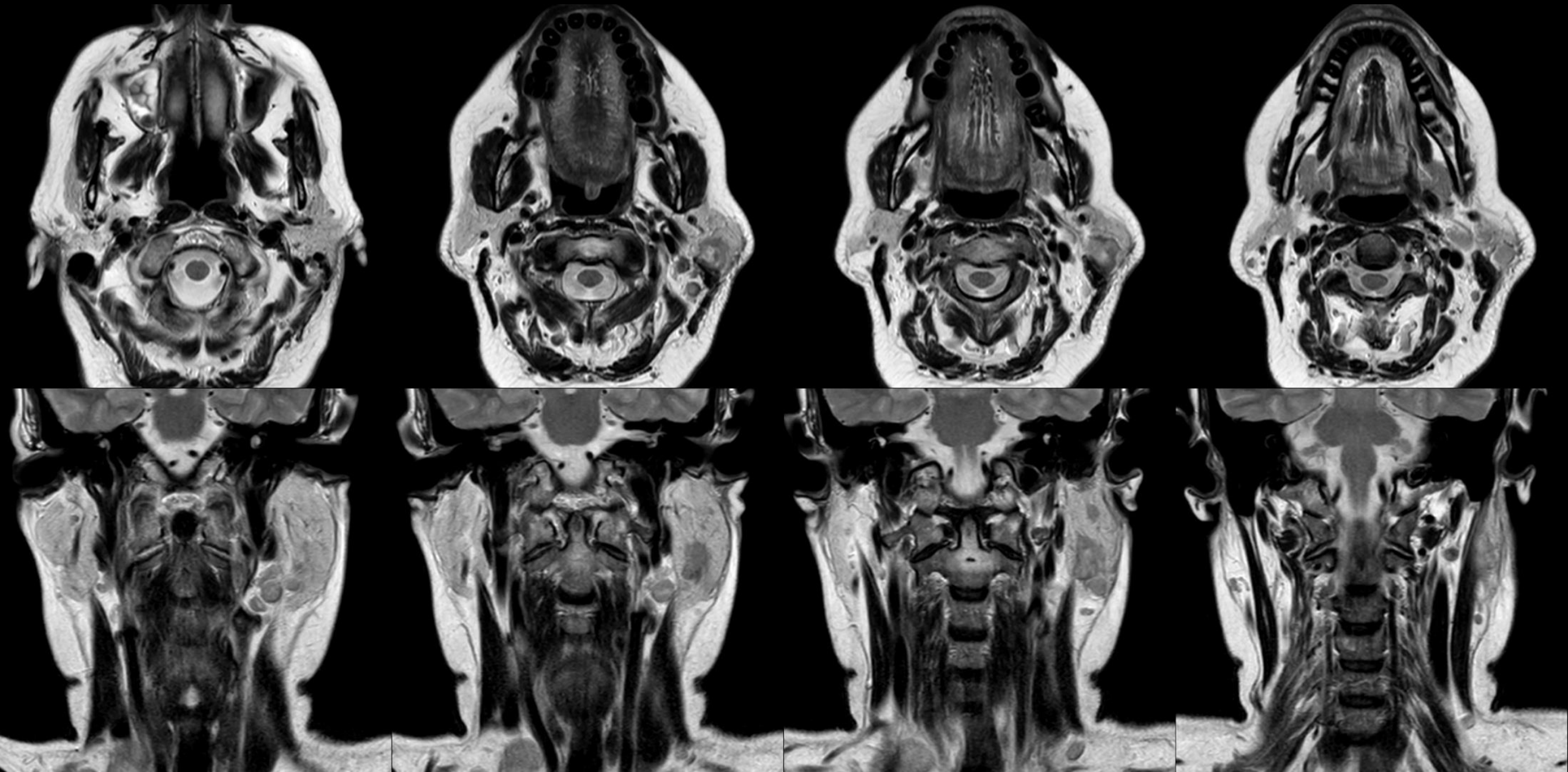


## **Tough & ... not so tough head & neck cases**

### **CASE 3**

**62-year-old female patient with progressing left facial swelling over a few months. MRI was obtained. Enclosed are representative images. What is your diagnosis /differential diagnosis?**

# CASE 3: MRI





# CASE 3: MRI

